

Fields

Custom Rug Collection by
FIONA LYNCH

tretford[®]
Custom Rugs

Fiona Lynch

Fiona Lynch is an award-winning Melbourne-based designer. Renowned for her bespoke approach to interiors and use of materials and colour, her projects are featured in national magazines, books and blogs throughout Australia and internationally. She brings her unique style to client briefs across retail, hospitality and residential projects. Fiona creates authentic outcomes for beautiful spaces with a real lifestyle or brand focus.

Fields is a collection of Fiona Lynch designed goat-hair rugs with geometric forms and dynamic colour palettes chosen from tretford's range. The jigsaw like patterns are inspired by geographical references, aerial view of crops and other defining influences in Fiona Lynch's life. The patterns, dynamic compositions and colours remind Fiona of 1960s New York Colour Field painters like Barnett Newman. The designs are also a nostalgic reminder of looking over the fence from her childhood home to see the triangle-shaped colour blocks of architect Peter McIntyre's iconic River House floating in the natural landscape. The Fields collection continues a modernist approach with its geometric forms and strong use of colour.

Fiona Lynch has had a long association with tretford and its Australian agent Gibbon Architectural through creating bespoke tretford goat-hair rugs for her interior design clients. However, it was an abstract, geometric-patterned rug with pops of yellow and magenta that she designed and commissioned for a Melbourne client that inspired this collaboration. The process has been a melding of creativity where curated colours from the tretford palette and experimental shapes by Fiona Lynch have come together like a jigsaw to create a signature range of rugs.



Fields

A tretford rug collection

All **tretford** rugs are made to order

Tailor to your space | customise to your colours

Handcrafted by

gibbon
architectural

Fields



Fields

Colourways. RECTANGLE

No.2



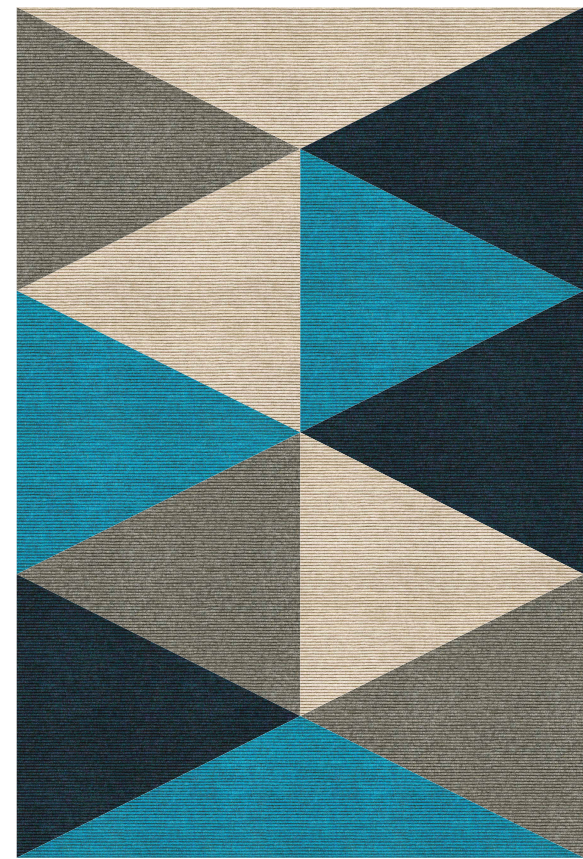
No.3



No.4



No.1



3000mm

2000mm

No.5



No.6



Fields

Colourways. RUNNER

No.1



No.3



No.4



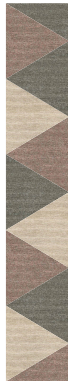
No.2



No.5



No.6



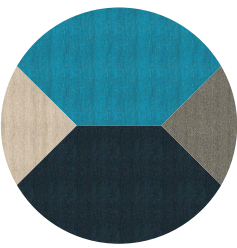
5400mm

900mm

Fields

Colourways. CIRCLE

No.1



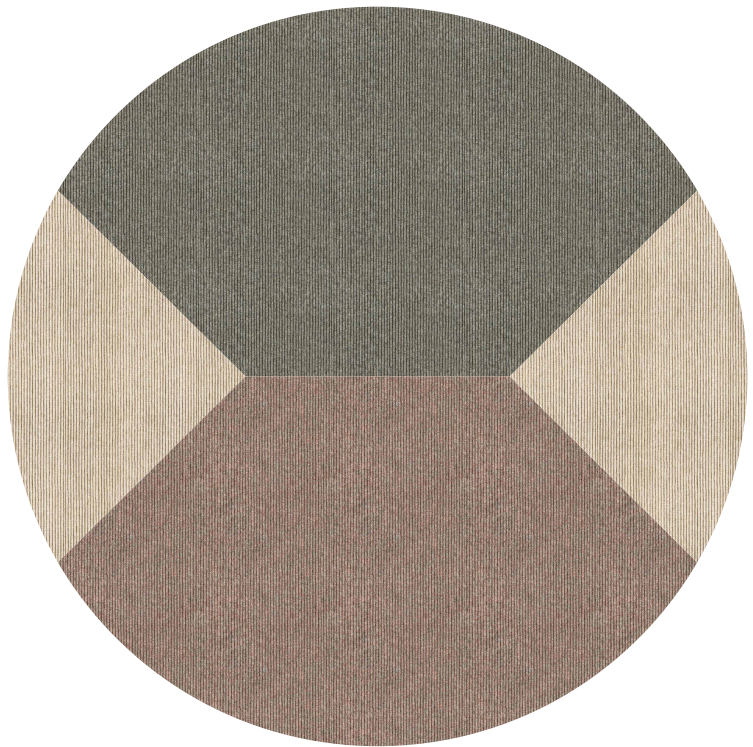
No.2



No.3



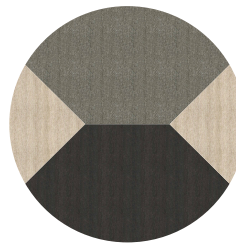
No.6



No.4



No.5



2000mm

2000mm

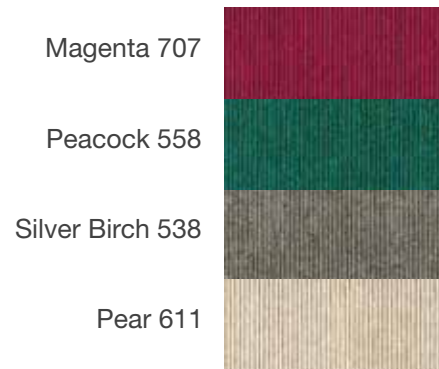
Fields

Colourway detail

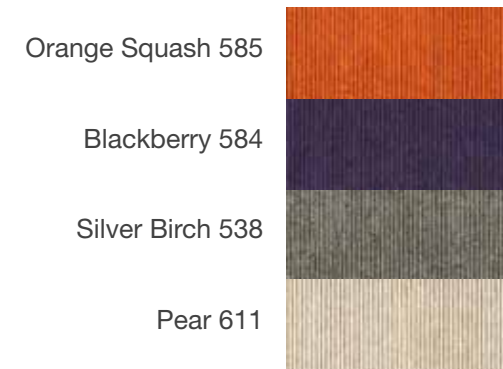
No.1



No.2



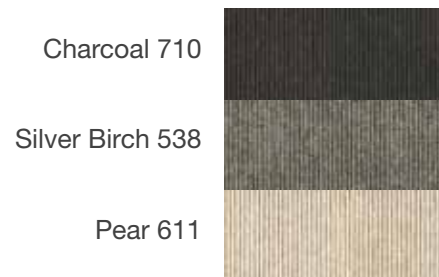
No.3



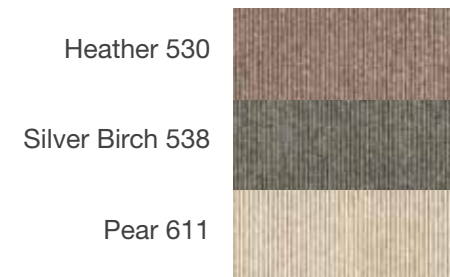
No.4



No.5



No.6



Or customise with your own colours from any of the 60 tretford colours:

www.gibbonarchitectural.com.au/tretford-custom-rugs/

About tretford Rugs

tretford Custom Rugs are handcrafted by Gibbon Architectural in Brisbane, Australia.

Made to order and crafted from tretford carpet,
it offers a vibrant colour palette with optimum durability.
tretford's unique construction makes it dimensionally stable,
allowing many shape options without requirement for binding.

Made with the highest grade Cashmere goat hair
from renewable and sustainable resources.

Enquire here: rugs@gibbongroup.com.au

gibbon
architectural

T: 07 3881 1777

www.gibbonarchitectural.com.au