



 **Advance**
Flooring Systems

New Zealand Stock Carpet Tiles

Awake Carpet Tiles

Awake New Zealand Stock Carpet Tiles

Awake carpet tiles feature an EcoAce-Bac for lightweight install to protect installer's backs and is NZ stocked to ensure projects can be delivered in full and on time. Utilising natural and subtle colours suited to any education, corporate and commercial environments.



Key benefits

- NZ Stock
- Large design and shade range
- Declare certified
- Lighter on Installers backs.
- 15 -year guarantee
- NO bitumen layer
- Exceeded NZ fire code
- Group 3 fire-rating for use on walls.*

*Group 3 fire-rating in accordance with ISO5660.1-2015 means Havelock can be used up to 1200mm high on a wall in educational facilities in accordance with NZ Building Code.

At a glance



15 Year Guarantee



Corporate



Education

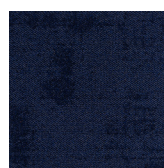


Compliant

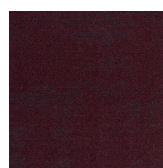


NZ Stock

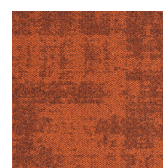
Colour palette



#5901



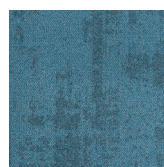
#5902



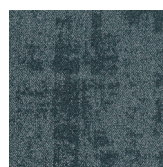
#5903



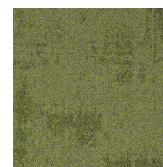
#5101



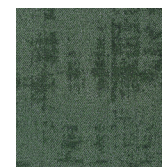
#5201



#5202



#5301



#5401



To view more products visit
advanceflooring.co.nz

New Zealand
Call Free: 0508 238 262

sales@advanceflooring.co.nz
advanceflooring.co.nz