



INSTALLATION GUIDE



1
Make sure the existing subfloor is clean, smooth, stable and dry. The floor must be level, with no more than 3mm (1/8 inch) change over 3m (10 feet). Use floor leveler if necessary to eliminate any hills or valleys.



2
Take the Neoflex™ REPTiles out of the box, and allow them to acclimatize at room temperature and humidity for 12 hours before you install them.



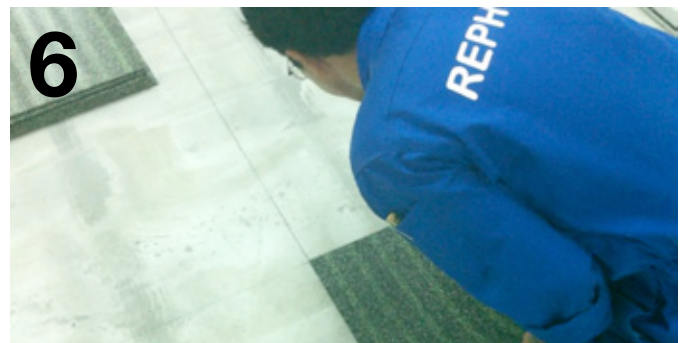
3
Measure the length and width of the room to be covered. Find the center of each direction and snap a chalk line across the room. The intersection of these lines is the middle of the room. Check the lines are square by using the 3-4-5 Right Triangle method.



4
Dry-lay a row of tiles in each direction until you reach all four walls. If the last tile needs to be cut narrower than one-quarter the width of a full tile, offset the center point and test the layout again.



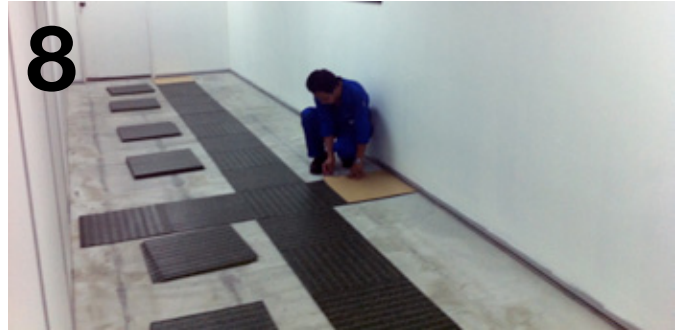
5
Start at one corner of the first tile you intend to lay and peel off the liner in a fluid motion.



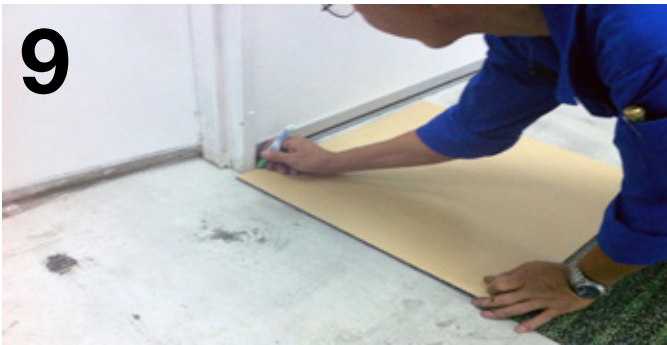
6
Lay the first tile in the corner of the center intersection. Gently lower it into place and press down on it to work out any trapped air – but don't try to stretch or compress it. Check the edges to be sure the tile is square to the guidelines.



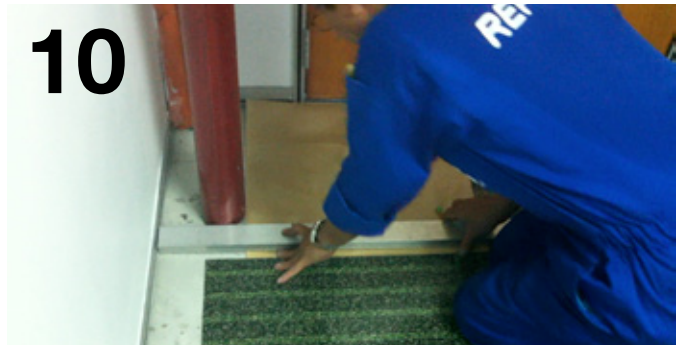
7
Working in one direction at a time, continue to lay tiles using the same method to peel back the liner and place one corner of the tile first.



8
When you reach a wall, flip over the next tile. Place it on top of the next-to-last tile and butt it against the wall. Make a mark across the back where it overlaps the previous tile. Move to a work surface and cut the tile along that line.



9
At a door jamb, place a tile face up where it will go. Lean it against the jamb and mark the point where they meet. Move the tile to find the other cut line, and mark that as well. Flip the tile over, mark the two lines using a carpenter's square, and cut out the corner.



10
To fit tiles around an object, such as a plumbing pipe, cut a tile-sized piece of paper. Work the paper into the space, cutting as needed until it fits. Then lay the paper on a tile and use it as a cutting guide. Fill in wide cuts with scrap material.



11
Work from the center outward in each quadrant. As you complete each row, check to see that all edges are straight.



12
Install any trim pieces, such as baseboards, shoe base, and thresholds.

Should you have any questions, contact your nearest distributor or email:
info@rephouse.com

www.rephouse.com